

# Charlbe®

## weld



## WELDING EARTH CLAMPS

MODEL NO: EC200, EC300 & EC500

PART NO: 8135435, 8135440 & 8135445

## USER INSTRUCTIONS

UK  
CA | CE

ORIGINAL INSTRUCTIONS

GC 0624

## INTRODUCTION

Thank you for purchasing this CLARKE product.

Please follow the instructions given. In doing so you will ensure the safety of yourself and that of others around you and you can look forward to the product giving you long and satisfactory service.

.Always read the safety warnings before use.

Model No	EC200	EC300	EC500
Part No	8135435	8135440	81354345
Amperage at 30% Duty			500A
Amperage at 40% Duty		300A	
Amperage at 60% Duty	200A		
Cable Section	25-35mm <sup>2</sup>	25-50mm <sup>2</sup>	35-70mm <sup>2</sup>

Tested in accordance with BS EN 60974-13:2021.

**WARNING: ELECTRIC SHOCK CAN KILL. DO NOT TOUCH LIVE ELECTRICAL PARTS WITH BARE HANDS AND DO NOT USE WET OR DAMP GLOVES OR CLOTHING. USE THIS CLAMP ONLY FOR ELECTRICAL WELDS AND FOR RETURN CURRENT OF THE WELDING CIRCUIT.**

For electrical conductivity make sure that the welding cable is properly connected to the clamp. The end of the cable must be properly sheathed and secured by tightening the special pins or the bolt of the cable clamp plate.

Use the cable section indicated above.

Make sure that the clamp is properly connected to the workpiece to be welded, cleaning the contact area adequately.

Welding gloves must be worn when using this clamp. **DO NOT** use at a higher amperage than the approved amperage rating.

**DO NOT** use this clamp for purposes other than those specified. If it is damaged, the clamp must be replaced.

Cleaning and repair of the welding machine **MUST BE CARRIED OUT** with the machine **SWITCHED OFF** and disconnected from the electrical supply.

The following safety symbols are to be found on this product.



Danger of electric shock



Spark hazard - wear eye protection



Heat hazard - wear protective gloves



Read the user manual

## GENERAL SAFETY WARNINGS

1. When welding indoors, ensure there is adequate ventilation.
2. **NEVER** look at an electric arc without protection. A welding headshield or helmet with appropriate lenses must be used when welding. All persons present must always use a proper welding face shield with suitable lenses.
3. After welding, **ALWAYS** check that the area is free of any sparks or glowing embers.
4. When necessary, use identical replacement parts to ensure that the safety of the product is maintained.

## ENVIRONMENTAL PROTECTION

**DO NOT** dispose of welding products with general household waste. They contain valuable raw materials and should be disposed of appropriately at a recognised disposal facility.

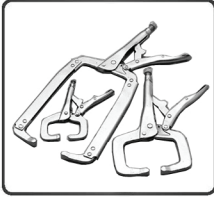
## GUARANTEE

This product is guaranteed against faulty manufacture for a period of 12 months from the date of purchase. Please keep your receipt which will be required as proof of purchase.

This guarantee is invalid if the product is found to have been abused or tampered with in any way, or not used for its intended purpose. Faulty goods should be returned to their place of purchase, no product can be returned to us without prior permission.

This guarantee does not effect your statutory rights.

# ACCESSORIES FROM THE CLARKE CATALOGUE



## WELDING CLAMPS

Available in 3-piece sets, either c-style or as flat/bending clamps



## TORCH COMPONENTS

A selection of swan necks, welding tips, shrouds and wire feed liners are available



## WELDING GASSES

A selection of gas bottles are available supplying Co<sub>2</sub>, Argon and Co<sub>2</sub>/Argon mix



## ANTI-SPATTER SPRAY

A 500ml bottle to prolong the life of your welding torch consumables



## WELDING WIRE

Available in all popular diameters from 0.3kg mini-spools to 15kg reels, including wire for aluminium, stainless steel and mild steel welding



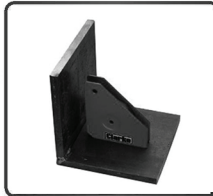
## EDGE SETTER/ JODDLER WITH HOLE PUNCH

Used for creating a lip along sheet metal



## INDUSTRIAL REGULATORS

A selection is available suitable for use with Co<sub>2</sub> or argon gas



## WELDING MAGNETS

Normally sold in pairs for hands-free welding. See also Clarke butt-welding clamps



## ELECTRODES

Normally available in packs of 10 as well as bulk packs



## ARC-ACTIVATED HEADSHIELDS

Various visual styles, - solar powered and auto darkening features for all welding and grinding tasks



## WELDING GAUNTLETS

Manufactured to EN-ISO 21420 and all current PPE standards



## WELDING SCREEN

Sturdy frame that can be dismantled for storage. Replacement screens available

# DECLARATION OF CONFORMITY - EC200



Fitzwilliam Hall, Fitzwilliam Place, Dublin 2

## DECLARATION OF CONFORMITY

This is an important document and should be retained.

We hereby declare that this product(s) complies with the following legislation:

2014/35/EU *Low Voltage Directive*  
2011/65/EU *Restriction of Hazardous Substances (RoHS) Directive*

The following standards have been applied to the product(s):

IEC 62321-4:2013/AMD1:2017, IEC 62321-7-1:2015, IEC 62321-7-2:2017, IEC 62321-3-1:2013,  
IEC 62321-1:2013, IEC 62321-2:2013, IEC 62321-5:2013, IEC 62321-6:2015, IEC 62321-8:2017,  
IEC 62321:2013, IEC 60974-13:2021

The technical documentation required to demonstrate that the product(s) meet(s) the requirement(s) of the aforementioned legislation has been compiled and is available for inspection by the relevant enforcement authorities.

The CE mark was first applied in: 2024

**Product Description:** Earth/Grounding Clamp  
**Model Number(s):** EC200  
**Serial/Batch Number:** Refer to product/packaging label  
**Date of Issue:** 22/01/2024

Signed:

J.A. Clarke  
Director



Hemond Street, Epping, Essex, CM15 4LG

## DECLARATION OF CONFORMITY

This is an important document and should be retained.

We hereby declare that this product(s) complies with the following legislation:

The *Electrical Equipment (Safety) Regulations 2016*  
The *Restriction of the Use of Certain Hazardous Substances in Electrical and Electronic Equipment Regulations 2012*

The following standards have been applied to the product(s):

IEC 62321-4:2013/AMD1:2017, IEC 62321-7-1:2015, IEC 62321-7-2:2017, IEC 62321-3-1:2013,  
IEC 62321-1:2013, IEC 62321-2:2013, IEC 62321-5:2013, IEC 62321-6:2015, IEC 62321-8:2017,  
IEC 62321:2013, IEC 60974-13:2021

The technical documentation required to demonstrate that the product(s) meet(s) the requirement(s) of the aforementioned legislation has been compiled and is available for inspection by the relevant enforcement authorities.

The UKCA mark was first applied in: 2024

**Product Description:** Earth/Grounding Clamp  
**Model Number(s):** EC200  
**Serial/Batch Number:** Refer to product/packaging label  
**Date of Issue:** 22/01/2024

Signed:

J.A. Clarke  
Director

# DECLARATION OF CONFORMITY - EC300



Fitzwilliam Hall, Fitzwilliam Place, Dublin 2

## DECLARATION OF CONFORMITY

This is an important document and should be retained.

We hereby declare that this product(s) complies with the following legislation:

2014/35/EU Low Voltage Directive  
2011/65/EU Restriction of Hazardous Substances (RoHS) Directive

The following standards have been applied to the product(s):

IEC 62321-4:2013/AMD1:2017, EN IEC 60974-13:2021, IEC 62321-3-1:2013, IEC 62321-7-1:2015,  
IEC 62321-7-2:2017, IEC 62321-1:2013, IEC 62321-2:2013, IEC 62321-4:2013, IEC 62321-5:2013, IEC 62321-6:2015,  
IEC 62321-8:2017

The technical documentation required to demonstrate that the product(s) meet(s) the requirement(s) of the aforementioned legislation has been compiled and is available for inspection by the relevant enforcement authorities.

The CE mark was first applied in: 2024

Product Description: Earth/Grounding Clamp  
Model Number(s): EC300  
Serial/Batch Number: Refer to product/packaging label  
Date of Issue: 13/05/2024

J.A. Clarke  
Director



Hemlock Street, Epping, Essex, CM16 4LG

## DECLARATION OF CONFORMITY

This is an important document and should be retained.

We hereby declare that this product(s) complies with the following legislation:

The Electrical Equipment (Safety) Regulations 2016  
The Restriction of the Use of Certain Hazardous Substances in Electrical and Electronic Equipment Regulations 2012

The following standards have been applied to the product(s):

IEC 62321-4:2013/AMD1:2017, EN IEC 60974-13:2021, IEC 62321-3-1:2013, IEC 62321-7-1:2015,  
IEC 62321-7-2:2017, IEC 62321-1:2013, IEC 62321-2:2013, IEC 62321-4:2013, IEC 62321-5:2013, IEC 62321-6:2015,  
IEC 62321-8:2017

The technical documentation required to demonstrate that the product(s) meet(s) the requirement(s) of the aforementioned legislation has been compiled and is available for inspection by the relevant enforcement authorities.

The UKCA mark was first applied in: 2024

Product Description: Earth/Grounding Clamp  
Model Number(s): EC300  
Serial/Batch Number: Refer to product/packaging label  
Date of Issue: 13/05/2024

J.A. Clarke  
Director

# DECLARATION OF CONFORMITY - EC500



Fitzwilliam Hall, Fitzwilliam Place, Dublin 2

## DECLARATION OF CONFORMITY

This is an important document and should be retained.

We hereby declare that this product(s) complies with the following legislation:

2014/35/EU Low Voltage Directive  
2011/65/EU Restriction of Hazardous Substances (RoHS) Directive

The following standards have been applied to the product(s):

IEC 62321-4:2013/AMD1:2017, EN IEC 60974-13:2021, IEC 62321-3-1:2013, IEC 62321-7-1:2015,  
IEC 62321-7-2:2017, IEC 62321-1:2013, IEC 62321-2:2013, IEC 62321-5:2013, IEC 62321-6:2015,  
IEC 62321-8:2017

The technical documentation required to demonstrate that the product(s) meet(s) the requirement(s) of the aforementioned legislation has been compiled and is available for inspection by the relevant enforcement authorities.

The CE mark was first applied in: 2024

Product Description: Earth/Grounding Clamp  
Model Number(s): EC500  
Serial/Batch Number: Refer to product/packaging label  
Date of Issue: 13/05/2024

Signed:

J.A. Clarke  
Director



Hemnal Street, Epping, Essex, CM16 4LG

## DECLARATION OF CONFORMITY

This is an important document and should be retained.

We hereby declare that this product(s) complies with the following legislation:

The Electrical Equipment (Safety) Regulations 2016  
The Restriction of the Use of Certain Hazardous Substances in Electrical and Electronic Equipment Regulations 2012

The following standards have been applied to the product(s):

IEC 62321-4:2013/AMD1:2017, EN IEC 60974-13:2021, IEC 62321-3-1:2013, IEC 62321-7-1:2015,  
IEC 62321-7-2:2017, IEC 62321-1:2013, IEC 62321-2:2013, IEC 62321-5:2013, IEC 62321-6:2015,  
IEC 62321-8:2017

The technical documentation required to demonstrate that the product(s) meet(s) the requirement(s) of the aforementioned legislation has been compiled and is available for inspection by the relevant enforcement authorities.

The UKCA mark was first applied in: 2024

Product Description: Earth/Grounding Clamp  
Model Number(s): EC500  
Serial/Batch Number: Refer to product/packaging label  
Date of Issue: 13/05/2024

Signed:

J.A. Clarke  
Director

# A SELECTION FROM THE VAST RANGE OF

# Clarke®

## QUALITY PRODUCTS



### AIR COMPRESSORS

From DIY to industrial, Plus air tools, spray guns and accessories.

### GENERATORS

Prime duty or emergency standby for business, home and leisure.

### POWER WASHERS

Hot and cold, electric and engine driven - we have what you need

### WELDERS

Mig, Arc, Tig and Spot. From DIY to auto/industrial.

### METALWORKING

Drills, grinders and saws for DIY and professional use.

### WOODWORKING

Saws, sanders, lathes, mortisers and dust extraction.

### HYDRAULICS

Cranes, body repair kits, transmission jacks for all types of workshop use.

### WATER PUMPS

Submersible, electric and engine driven for DIY, agriculture and industry.

### POWER TOOLS

Angle grinders, cordless drill sets, saws and sanders.

### STARTERS/CHARGERS

All sizes for car and commercial use.



## PARTS & SERVICE: 0208 988 7400

### Parts Enquiries

[Parts@clarkeinternational.com](mailto:Parts@clarkeinternational.com)

### Servicing & Technical Enquiries

[Service@clarkeinternational.com](mailto:Service@clarkeinternational.com)

SALES: UK 01992 565333 or Export 00 44 (0)1992 565335

**Clarke** INTERNATIONAL Hemnall Street, Epping, Essex CM16 4LG  
[www.clarkeinternational.com](http://www.clarkeinternational.com)